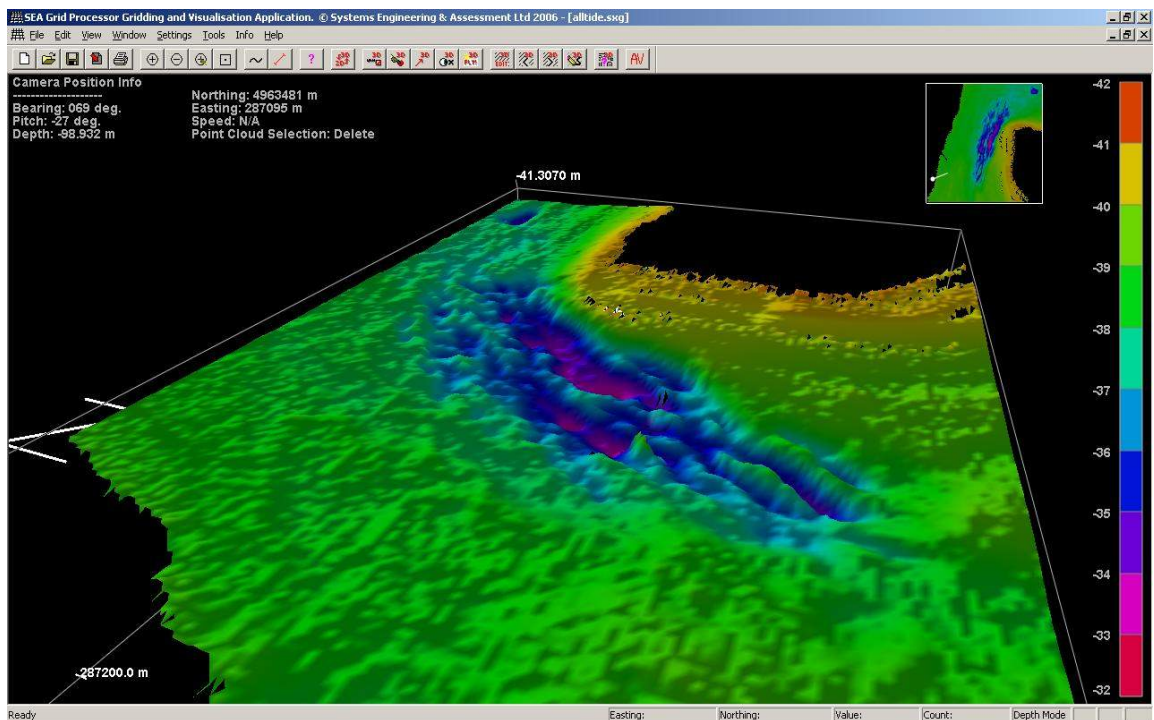


Location:	<b>Goro, Rover Po Delta, Italy</b>
Date:	<b>July 2007</b>
System Used:	<b>SWATHplus-H 468 kHz</b>
Ancillaries:	<b>Applanix POS-MV, RTK positioning</b>

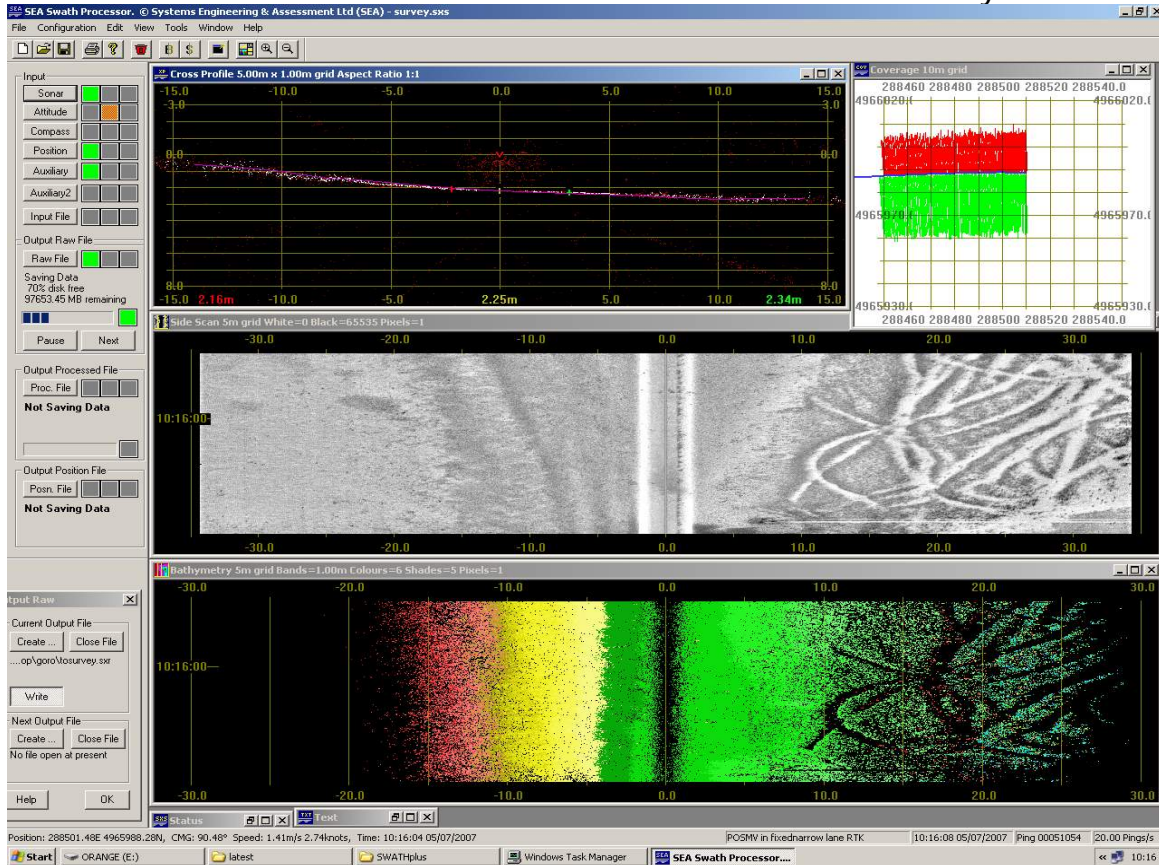
Extremely shallow water survey, up to 3m, sand bar survey; 10km long 40m to 250m wide. Survey undertaken in a single day using SWATHplus-H with Applanix POS-MV and RTK positioning.



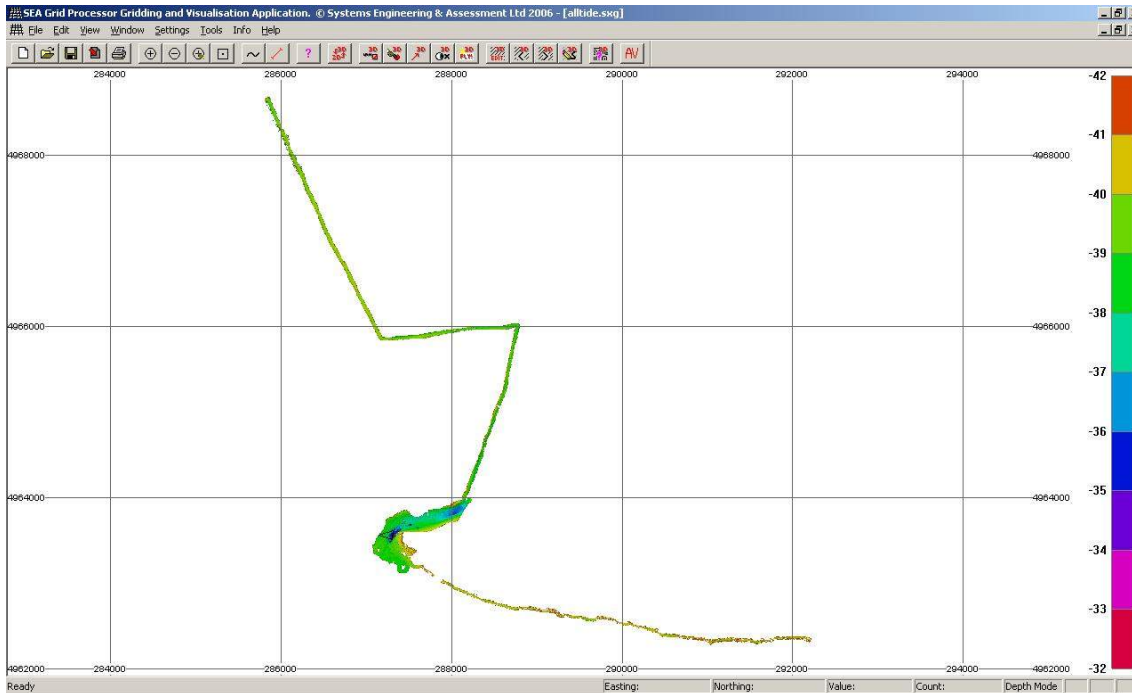
*Survey boat and detail of bowmount arrangement*



*3d bathy view of sand bar and scouring*



Real time view of fishing scars



Overview of the survey area

