

# DECKsim Procedural Training

**Immersive, high-fidelity,  
modular training environments**

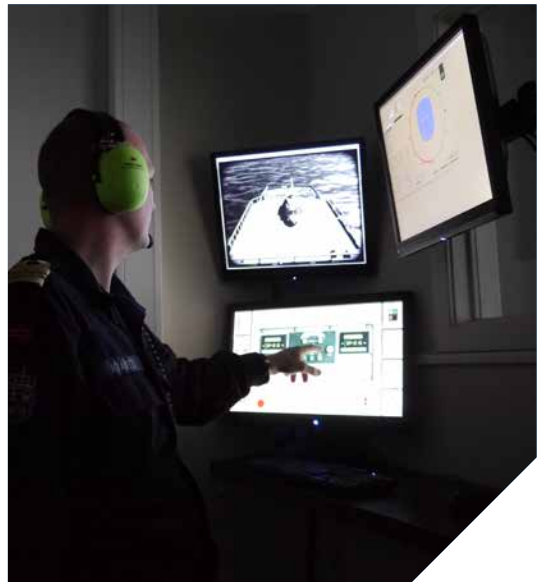




## The DECKsim product range from SEA provides immersive, high-fidelity 3D virtual training environments.

DECKsim training sessions is easily configurable by an instructor to incorporate any desired combination of airfield or ship flight deck, aircraft, approach/departure waypoints and standard or emergency procedures.

Designed to keep instructor 'simulator driving' workload to a minimum, the DECKsim trainer environment enables firm focus on the procedural and cognitive skills transfer aspect of every training session.





## System Types

### Fixed System

- Multi-channel high-res projection system
- Wireless automatic gesture recognition
- Surround sound audio
- Scalable observer/debrief facility for larger class sizes
- Provides on-deck Flight Deck Officer and remote

### Portable System

- Student Virtual Reality (VR) and Augmented Reality (AR) head mounted display options
- System runs from 2 laptops with no loss in performance
- Highly portable within a single pelicase
- Ideal for classroom and deployed training



## CONTACT SEA

+44 1373 852000

[info@sea.co.uk](mailto:info@sea.co.uk)

[www.sea.co.uk](http://www.sea.co.uk)

[www.decksim.co.uk](http://www.decksim.co.uk)



### **Systems Engineering & Assessment Ltd**

Beckington Castle, 17 Castle Corner, Beckington,  
Frome, Somerset, BA11 6TA, United Kingdom

**a Cohort plc company**

S&T 009 - 0817